



APE LEAD INSPECTION



Initial and Weekly Inspections are visual inspections and should be performed by a competent person.

Periodic inspections are defined as annual visual inspections with dated records to be kept on file with the owner. Periodic inspections shall be performed by a competent person.

- Ensure lead connection pins or bolts are properly installed per manufacturer's specifications.
- Use caution when removing pins from leads. Pins can be ejected quickly when hit by a hammer. Ensure the area behind the pin is clear before removing the pin or use a backstop to prevent the pin from causing injury or property damage.
- Stand inside the lead sections during assembly/disassembly only as required to install or remove the connecting pins. Aligning or support leads to avoid sudden movements while installing or removing pins.
- A minimum weekly documented inspection of the pile driving leads, connections to crane, and spotters (if equipped) shall be conducted. If found to be unsafe they shall be immediately taken out of service and their use prohibited until unsafe conditions have been corrected. Inspect lead cords, lacing, ladders and welds for damage. Repair or replace in accordance with manufacturer's specifications. If laying down the leads is not a practical option, visually inspect using binoculars, or aerial lift.
- Ensure leads are periodically cleaned to avoid safety hazards when climbing.
- Frequently inspect the connection between the hoist line and the leads in some applications.

	Initial Inspection	Weekly Inspection	Biweekly Inspection	Periodic Inspection
Check straightness of leads and connections of lead parts for tightness (when assembling)				
Make sure that the portion of the leads that guide the hammer, as well as all Sheaves used are well greased.				
Clearly mark the leads as a reference for drop height observations (If required)				
Check the alignment between the leads and the pile. (As needed for each pile)				
Check geometry of leads for twisting, racking or bending (Visual)				
Check lead members for dents, bends, abrasions, or missing members (Visual)				
Inspect fastening hardware for deformation or excessive wear				
Check for Welds for breaks, cracks, or deformation. (See Figure 1A.)				
Check geometry of leads for twisting, racking, bending, sweep, or camber (See Figure 1B)				
Check pinned connectors for abrasion, deformation, and method of connection to the leads (See Figure 1C)				
Fastening hardware for proper grade, deformation or excessive wear				
Connection between the boom tip and fixed leads (horse's head) should be inspected weekly when fittings are greased (When applicable)				
Ensure leads are periodically cleaned to avoid safety hazards when climbing. (As needed)				
Frequently inspect the connection between the hoist line and the leads. (When applicable)				
Grease lead sheaves once per week (See Figure 1D & 1F) Multi-purpose grease containing MoS2 or similar.				



Figure 1A.

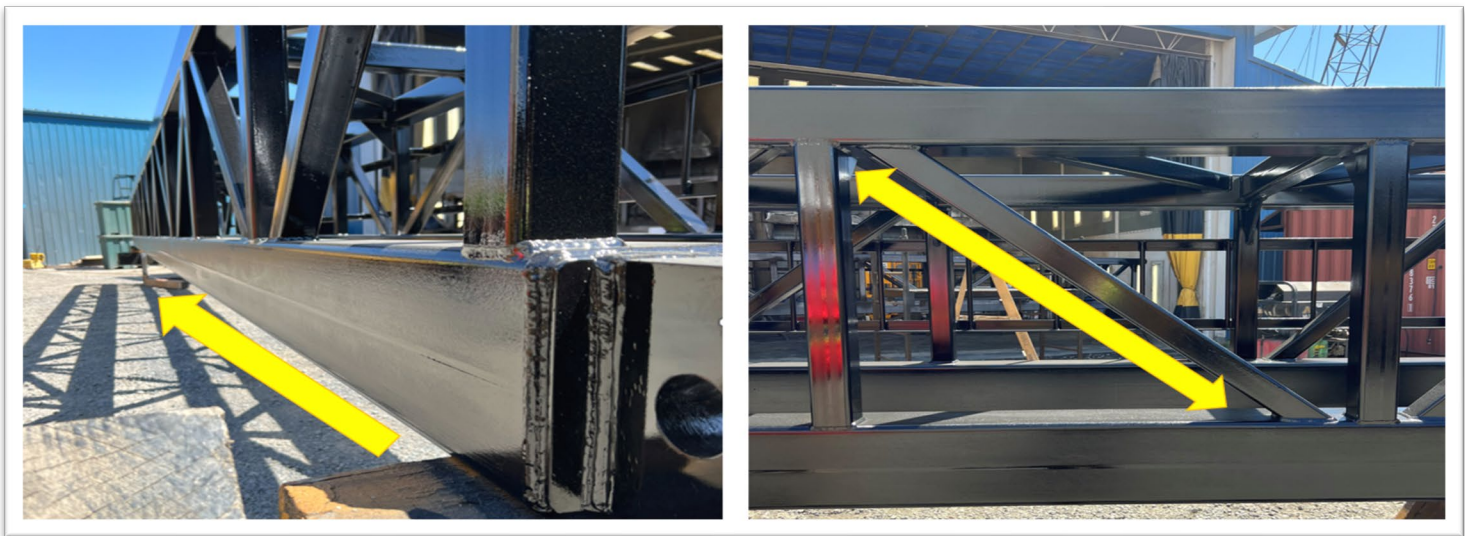


Figure 1B.

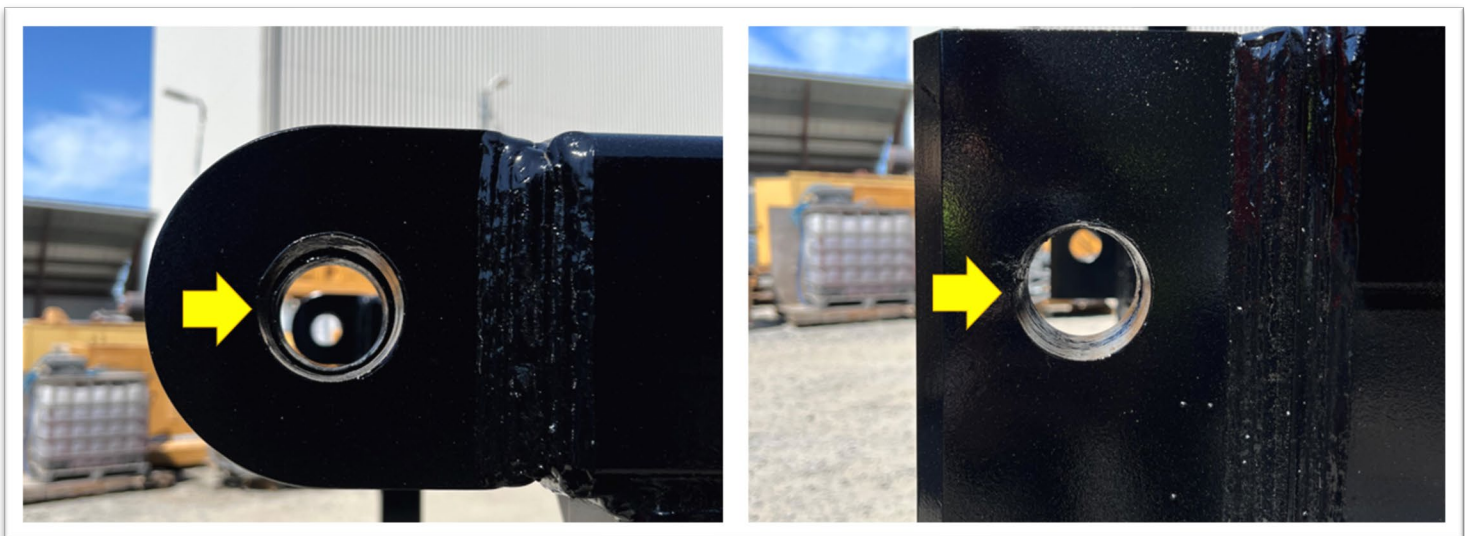
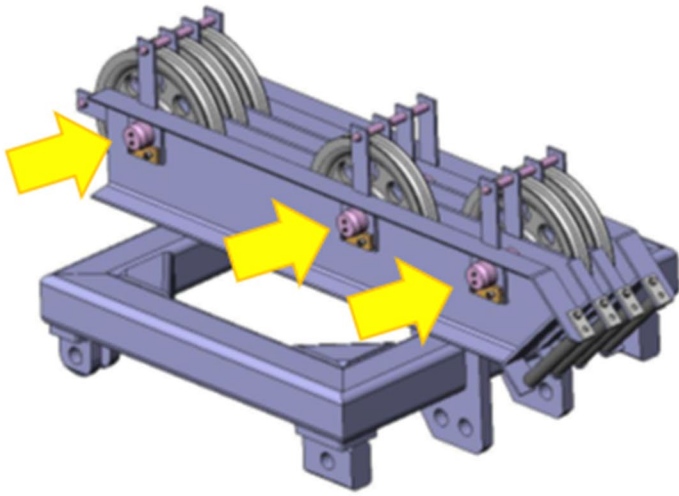
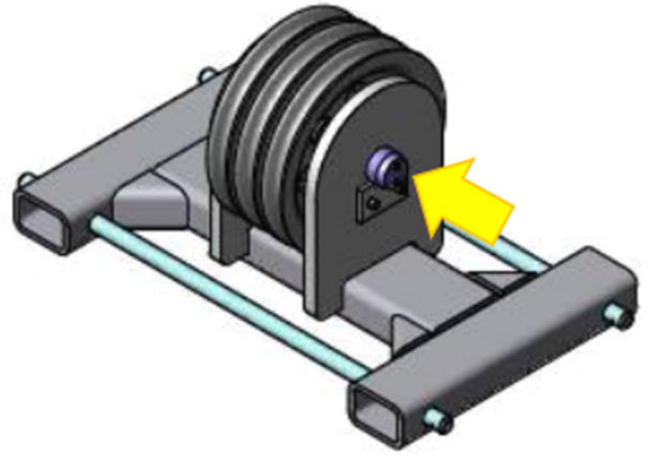


Figure 1C.



Sheave location on head block



Sheave location on rooster

Figure 1D

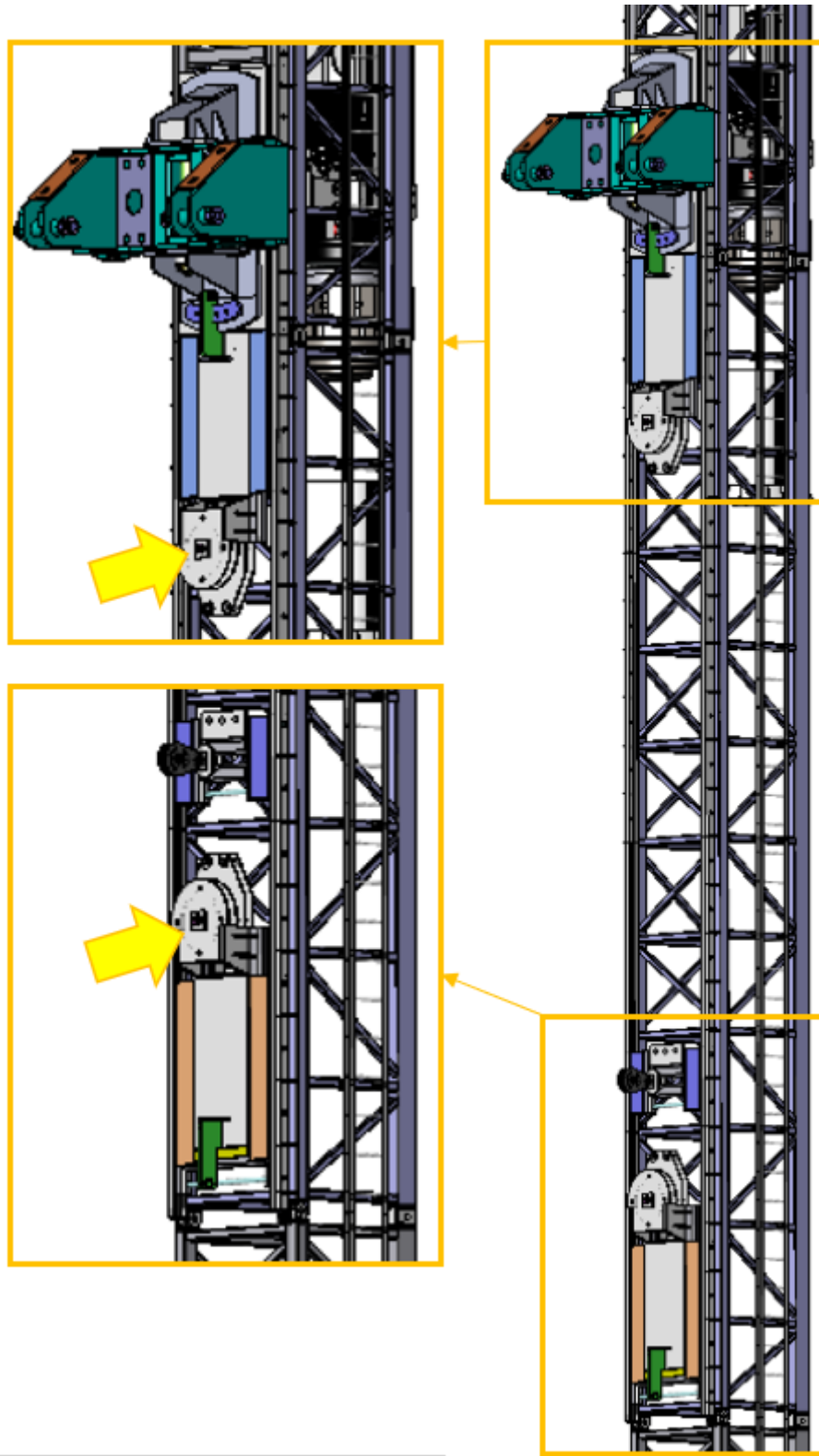


Figure 1F